

# Features of the Flow

## Key benefits at a glance

- Suitable for curved staircases even as narrow as 60 cm and up to an incline of 70°
- The automatic swivel-seat and footrest help you to get on and off the chair safely, as well as allowing for optimum use of the space available.
- Radio-controlled for complete ease-of-use, with a joystick in the armrest and remote call and park stations at each stop.
- The patented single-tube system minimises the amount of space used, even where there are adjoining doors or where access is limited.
- Comfortable chair with adjustable height and ergonomically-designed padded seat.
- The seat and footrest fold up to maximise the space available.
- Curved armrests give added security and support while you travel.
- Modern drive system ensures quiet operation.
- Various seat and colour variations to complement the décor of your home.



**ThyssenKrupp Accessibility BV**  
Van Utrechtweg 99, P.O. Box 754  
2920 CB Krimpen aan den IJssel  
The Netherlands  
Phone: +31 (0)180 530988  
Fax: +31 (0)180 530998  
E-mail: [info@tka-international.com](mailto:info@tka-international.com)  
[www.tka-international.com](http://www.tka-international.com)

All statements as to the properties or utilization of the materials and products mentioned in this brochure are for descriptive purposes only. Guarantees in respect of the existence of certain properties or utilization of the material mentioned are only valid if agreed upon in writing. Subject to technical changes without notice. Reprints, even extracts, only with prior permission of the publisher.

# Flow

## The Stairlift for curved staircases



0810819 UK

A ThyssenKrupp  
Elevator Company

**ThyssenKrupp Access**



ThyssenKrupp

## Comfortable and space-saving

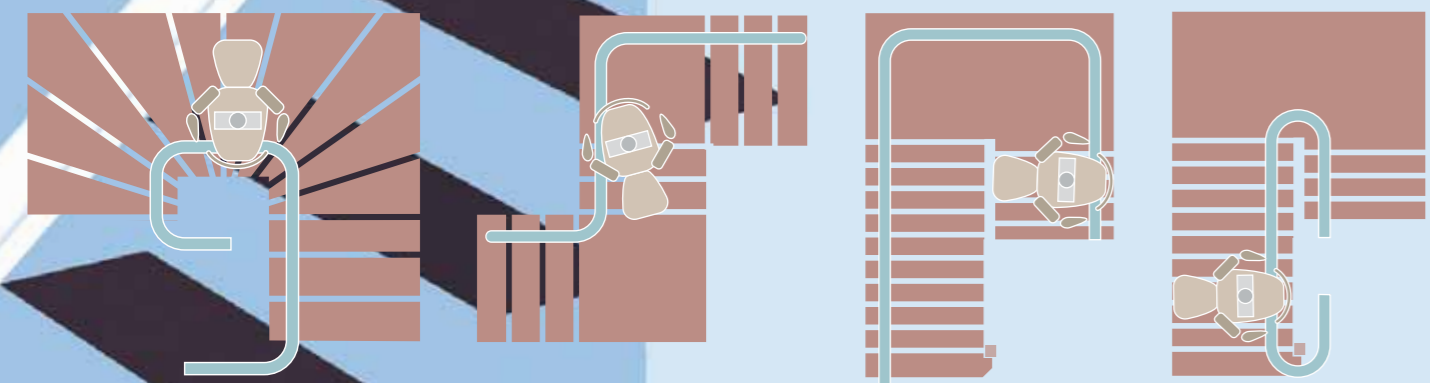
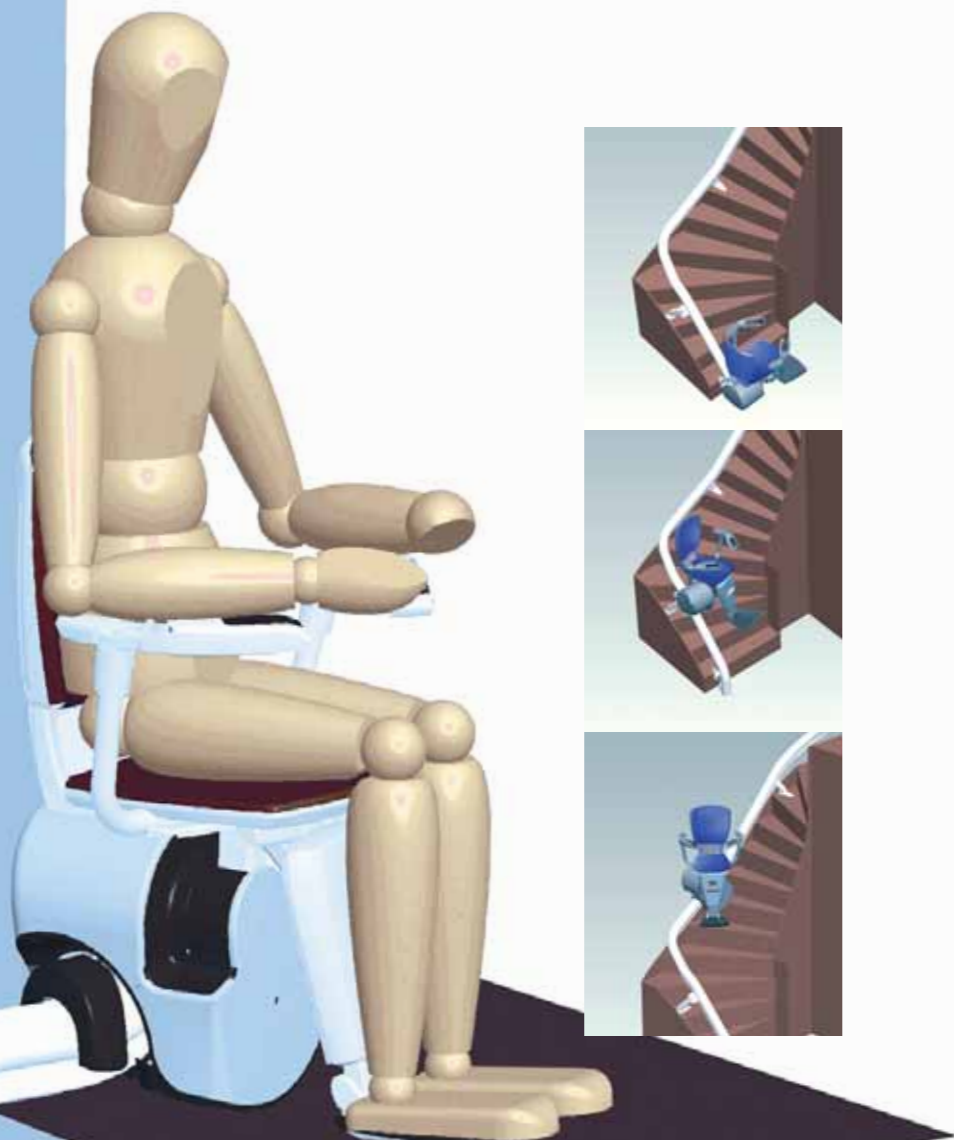
The safe solution for curved and steep staircases

With the Flow Stairlift you can negotiate even steep, narrow or winding staircases safely and comfortably.

The chair uses a single-rail system, only 8cm in diameter. With its unique "vertical start" the rail fits snugly in the vicinity of doors. To completely move the lift away from the landings, the "park around the corner" option is the perfect solution.

As the single-rail system is installed very close to the stairs and to the wall, or even on the inside of the staircase, the space required on the staircase is minimal. For this reason the Flow is also suitable for multiple-storey and spiral staircases, whilst leaving the staircase virtually unrestricted.

The unique automatic swivel system ensures that the staircase space is used to an optimum: during travel, both seat and footrest swivel automatically into the best possible position. This system means that you can safely, easily and comfortably get off the lift at the start and end of the staircase with both feet on the landing.

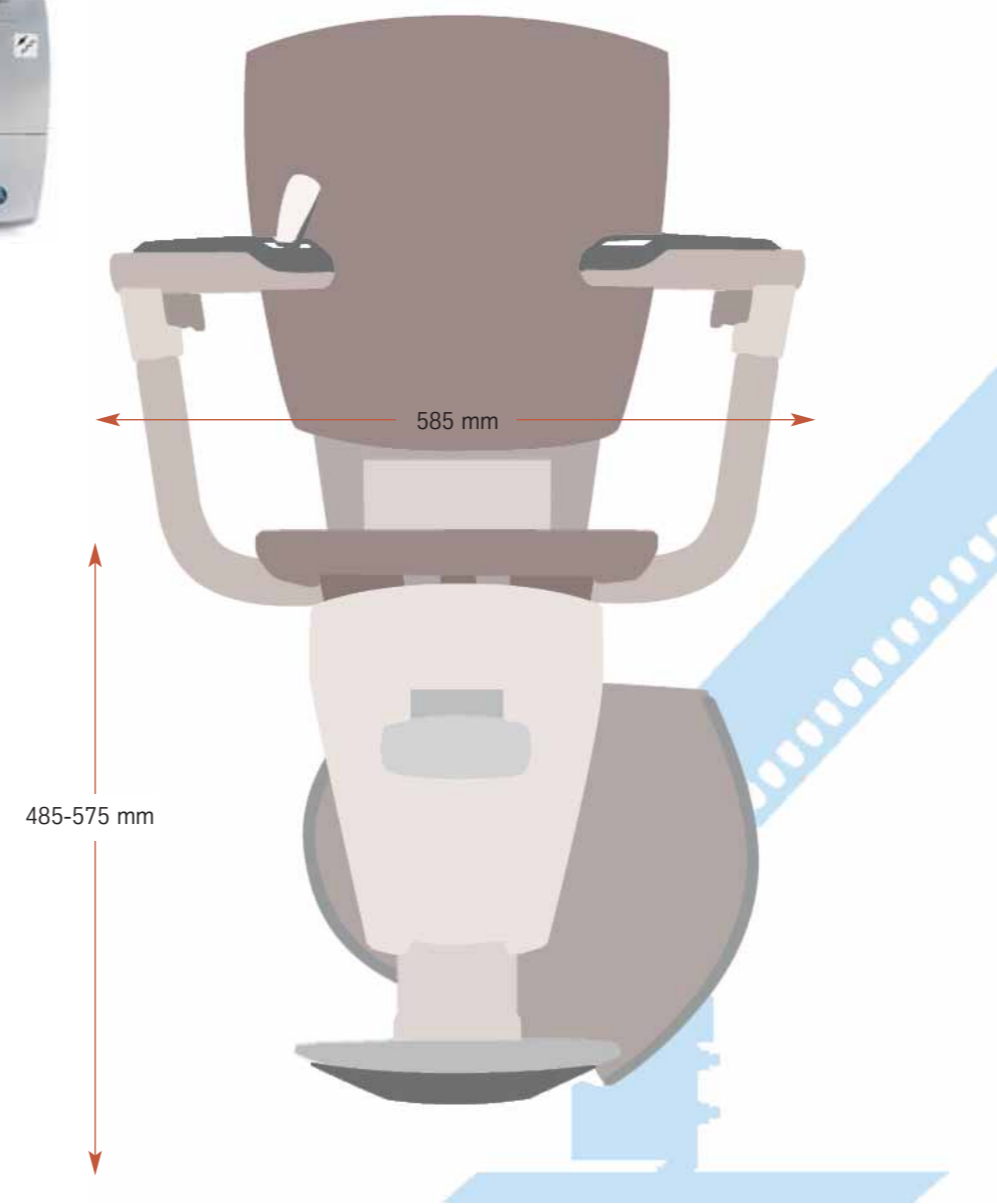


## The simplest operation

Anytime

The Flow Stairlift is operated by a joystick in the armrest, as well as call and park stations at each stop. So, you can easily call the lift to you or park it around the corner.

There is a choice of 4 different joystick variations; each is designed so to ensure safe operation. Choose the most suitable version for you. Incidentally, when you let go of the joystick the lift stops immediately. The joystick also acts as a key, so that the lift is protected from misuse. The lift is charged at each stop point and it also has an energy-saving mode. This means that the lift is always ready for use.



## Made to measure

Flow Stairlift complements the décor of your home

The Flow has been designed so that it harmoniously and discreetly blends into each home environment. This is achieved by the space-saving structure, the tasteful design, as well as the different colour and seat variations.

The seat pad is available in two different materials and a total of 10 different colours. This can also be individually matched to the rail, which comes in 4 different colours.

Stairlift virtual configurator: See how the Flow would suit your home at [www.tka-international.com](http://www.tka-international.com)

grey white	grey brown	telegrey	beige brown	Rail
brown	red	blue	beige	Upholstery Fabric
blue	sisal	red		Upholstery Vinyl
green	maroon	grey		

